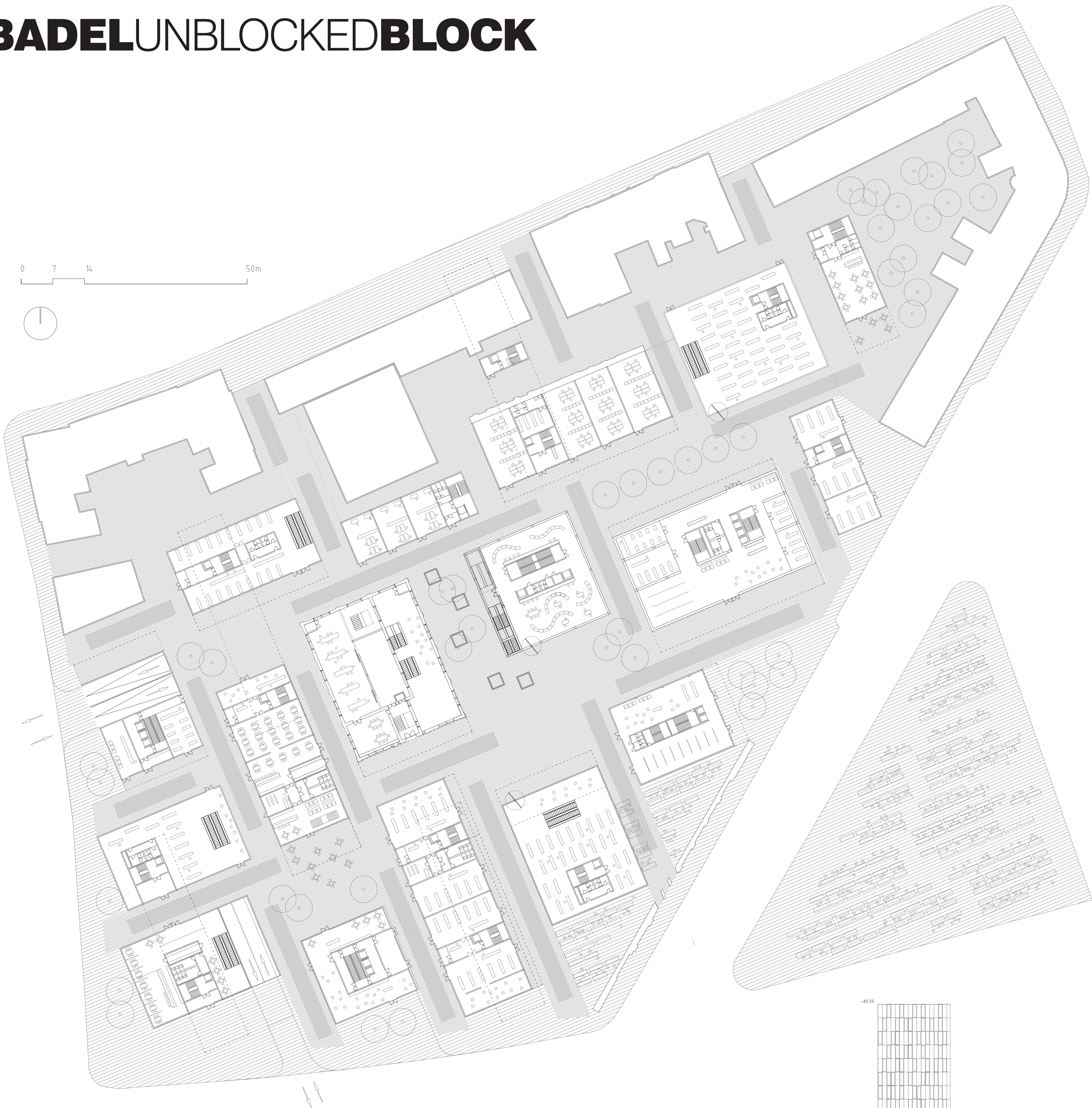


BADEL UNBLOCKED BLOCK

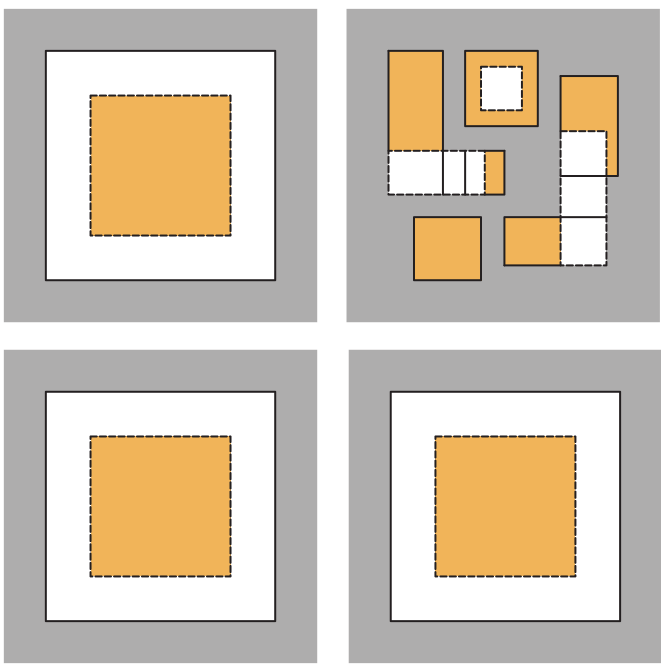
SITE PLAN 1:1000



BADELUNBLOCKEDBLOCK



GROUND FLOOR 1:500

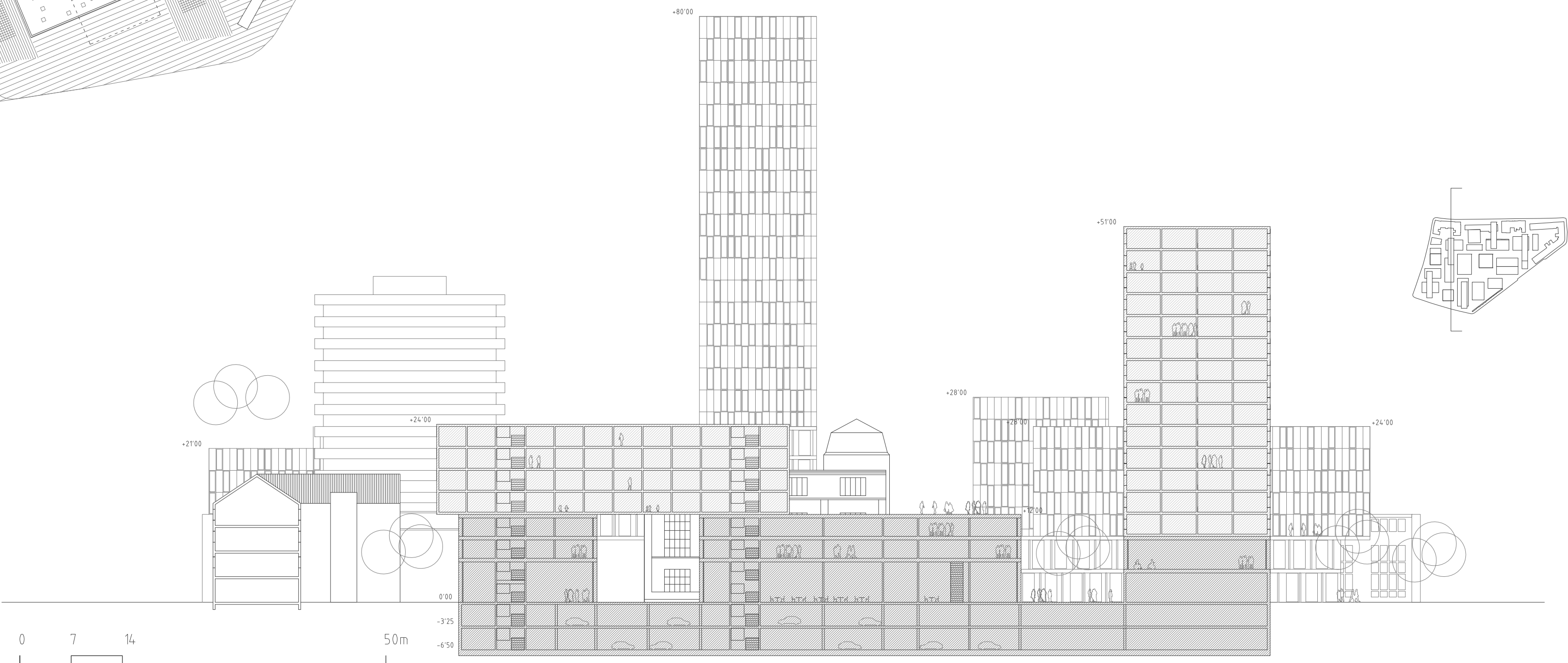


Fact that the land of Badel Block is city owned encourages one to develop and explore concepts which tend to improve the quality, diversity and character of public space. In this sense, rather than making a typical block and playing Zagreb's same old game of interpolation and extrapolation we decided to develop the idea of an "un-blocked" block; a type of urban morphology that sets a block boundary loose in order to make it more publicly accessible.

In this manner we created a concept which consists of a series of public and semi-public carpet-like spaces, allowing pedestrian and visual access into and through the block. The proposed public network is oriented towards and interacts with the existing context by reinforcing the existing public infrastructure and inviting surrounding urban characters to participate in a civic gathering.

The created morphology acts as a group form, consisting of free-standing objects aligned in the north-south direction, mirroring the "Distelerija" and the existing building pattern at the site. The program is organised in two connected layers: the bottom layer – a network of semi-public and open-public space; the top layer – beginning with the semi-private roof terraces and ending with private space.

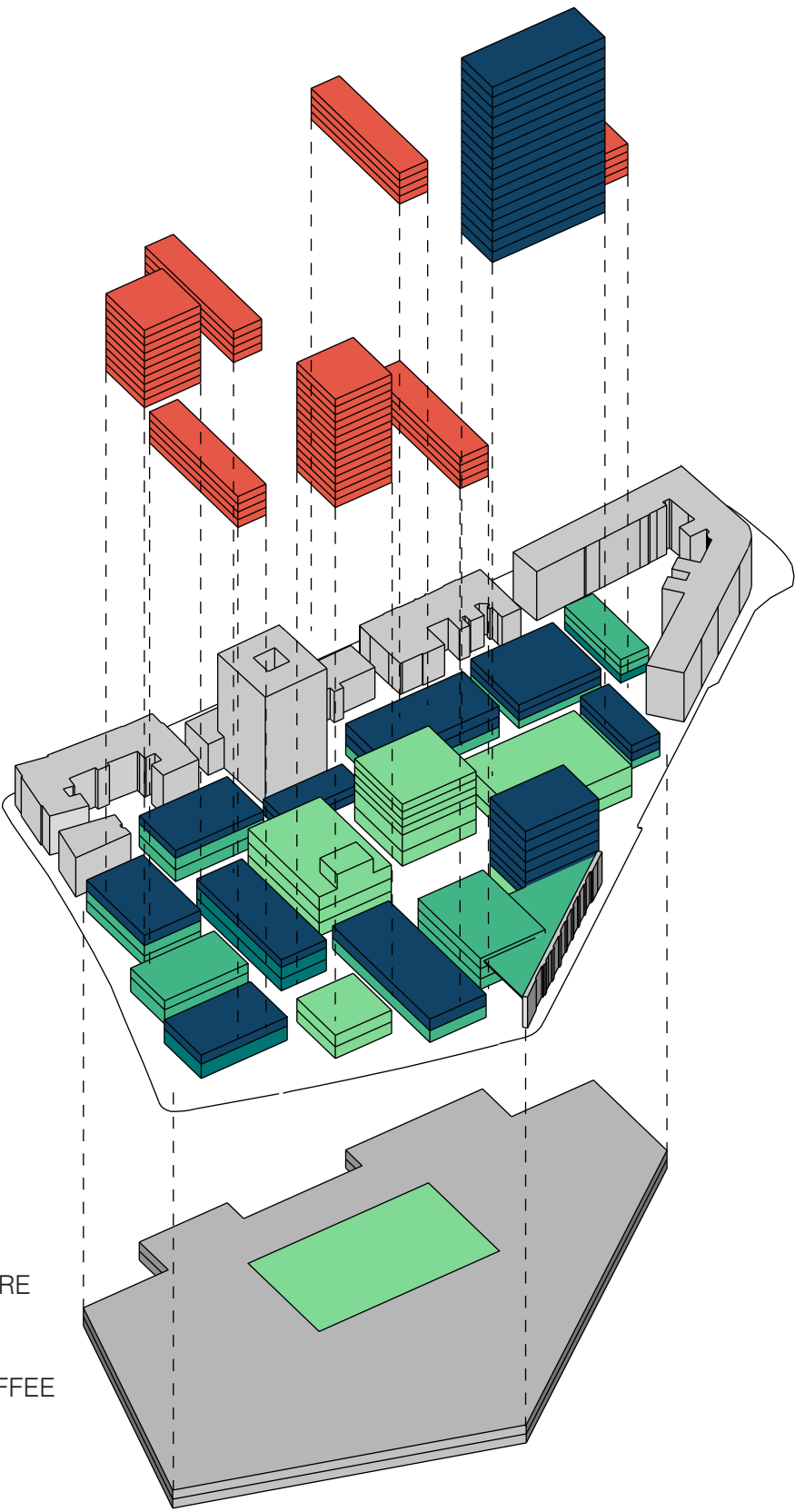
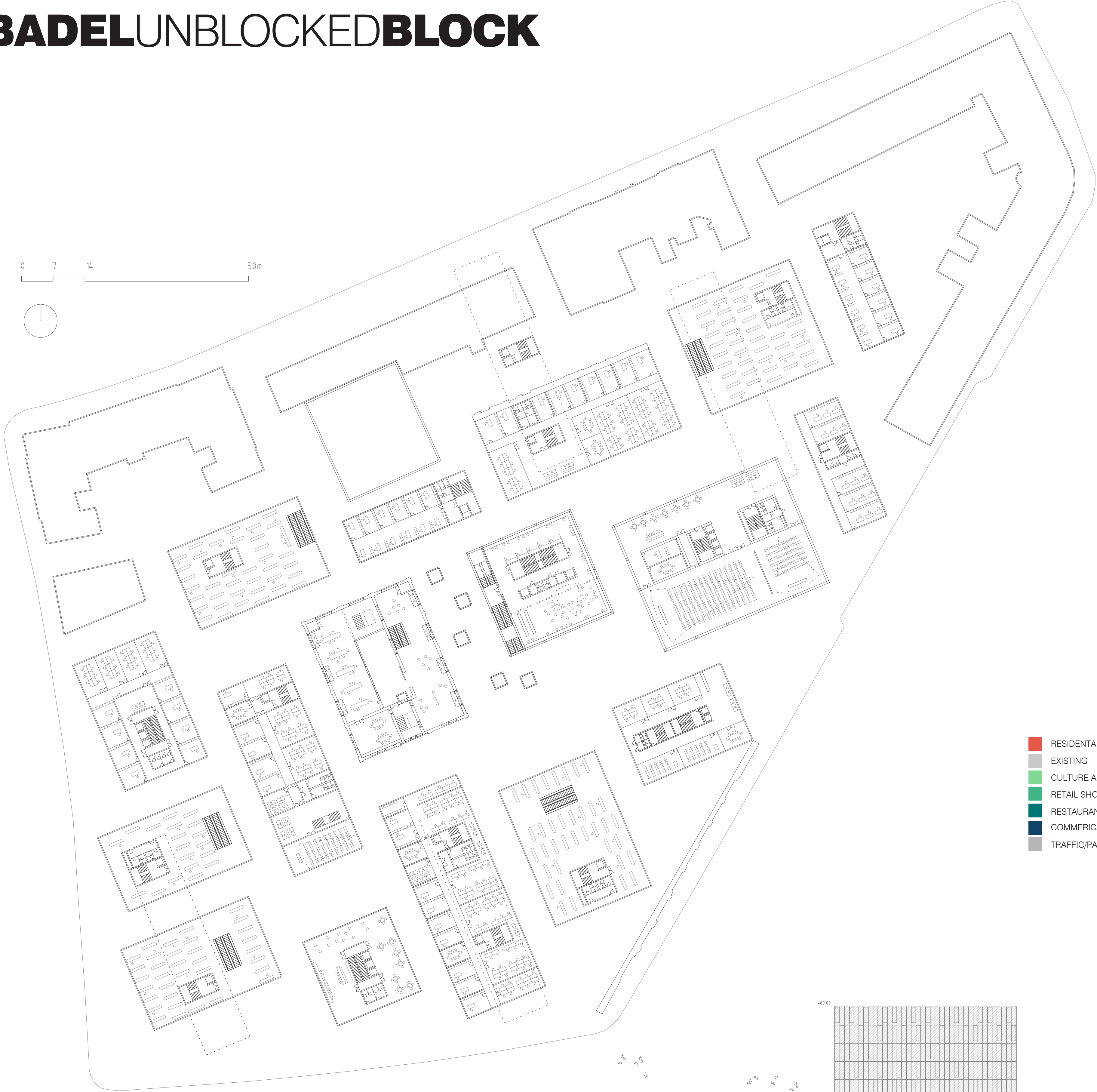
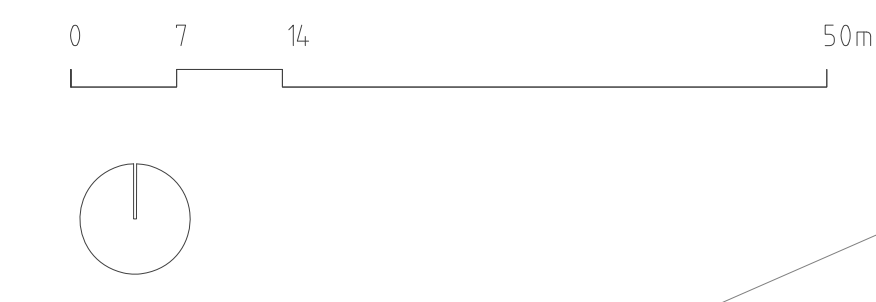
The final result is an image of diversity, which recognizes an existing heterogeneity of the site and responds to it in a way that reveals the inherent Badel Block identity.



SECTION N-S 1:500



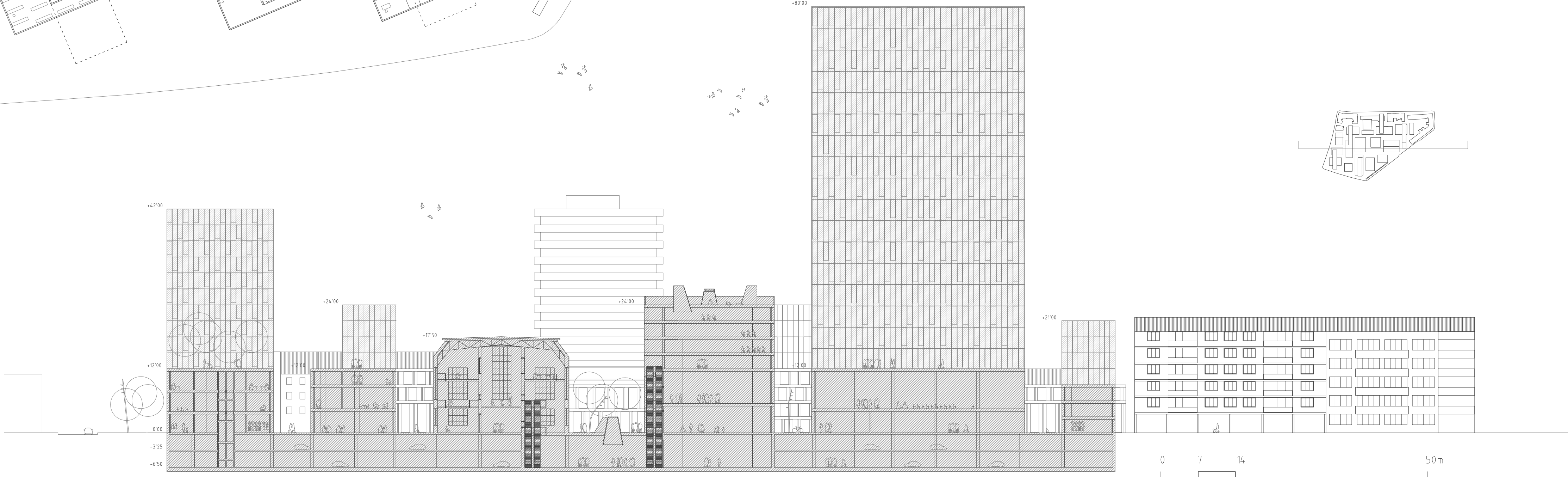
BADELUNBLOCKEDBLOCK



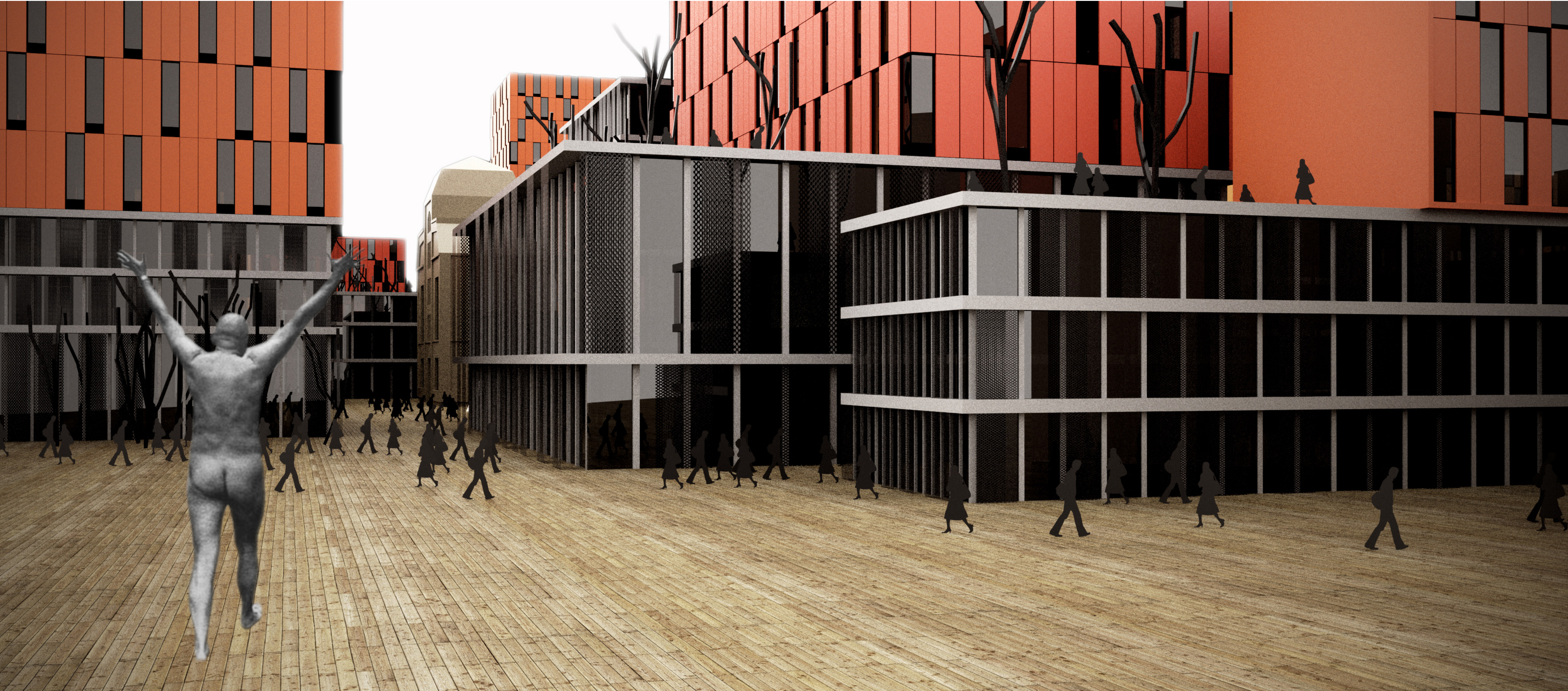
- RESIDENTIAL
- EXISTING
- CULTURE AND LEISURE
- RETAIL SHOPPING
- RESTAURANTS & COFFEE
- COMMERICAL
- TRAFFIC/PARKING

PROGRAMME DIAGRAM

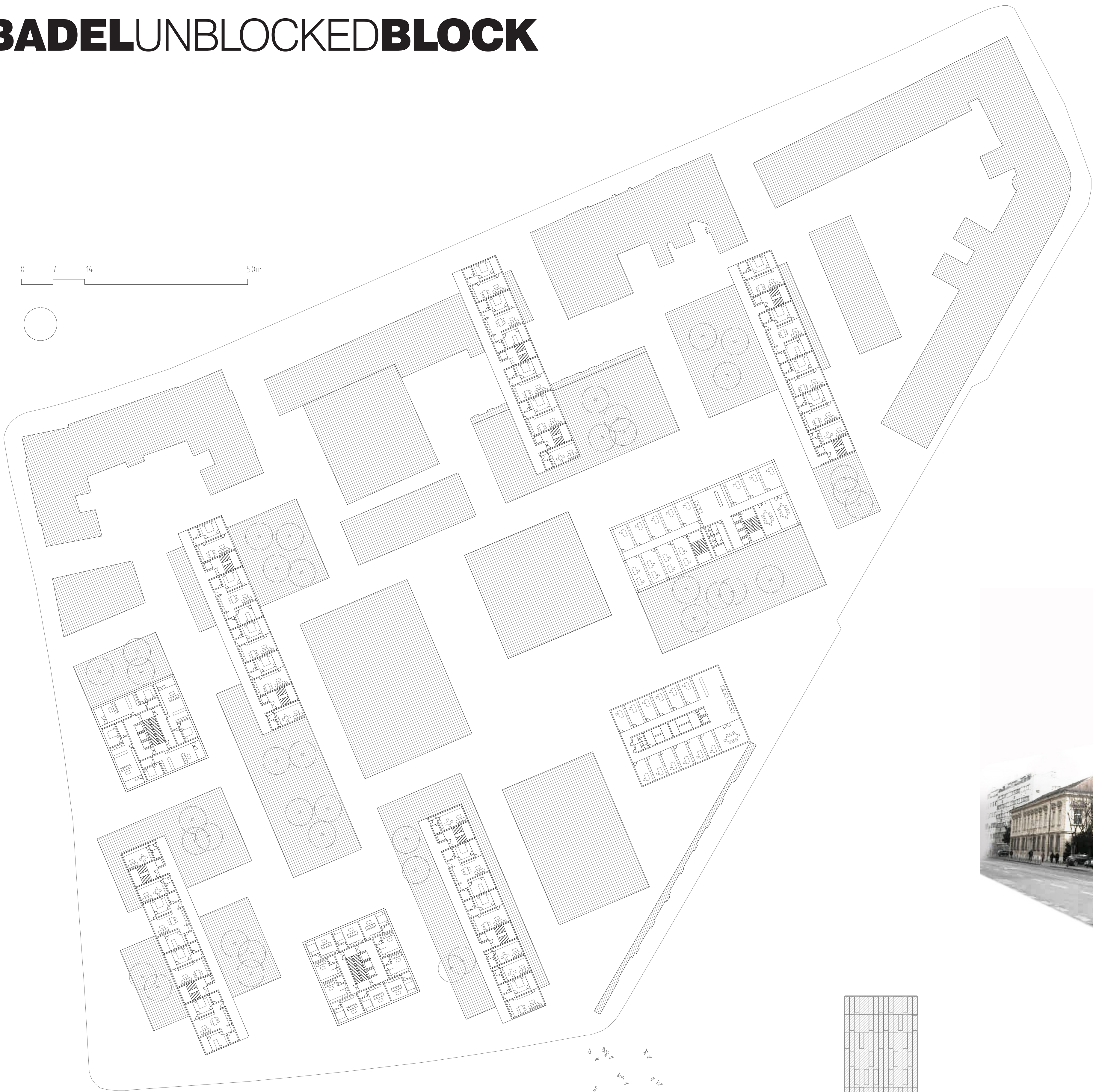
SECOND FLOOR 1:500



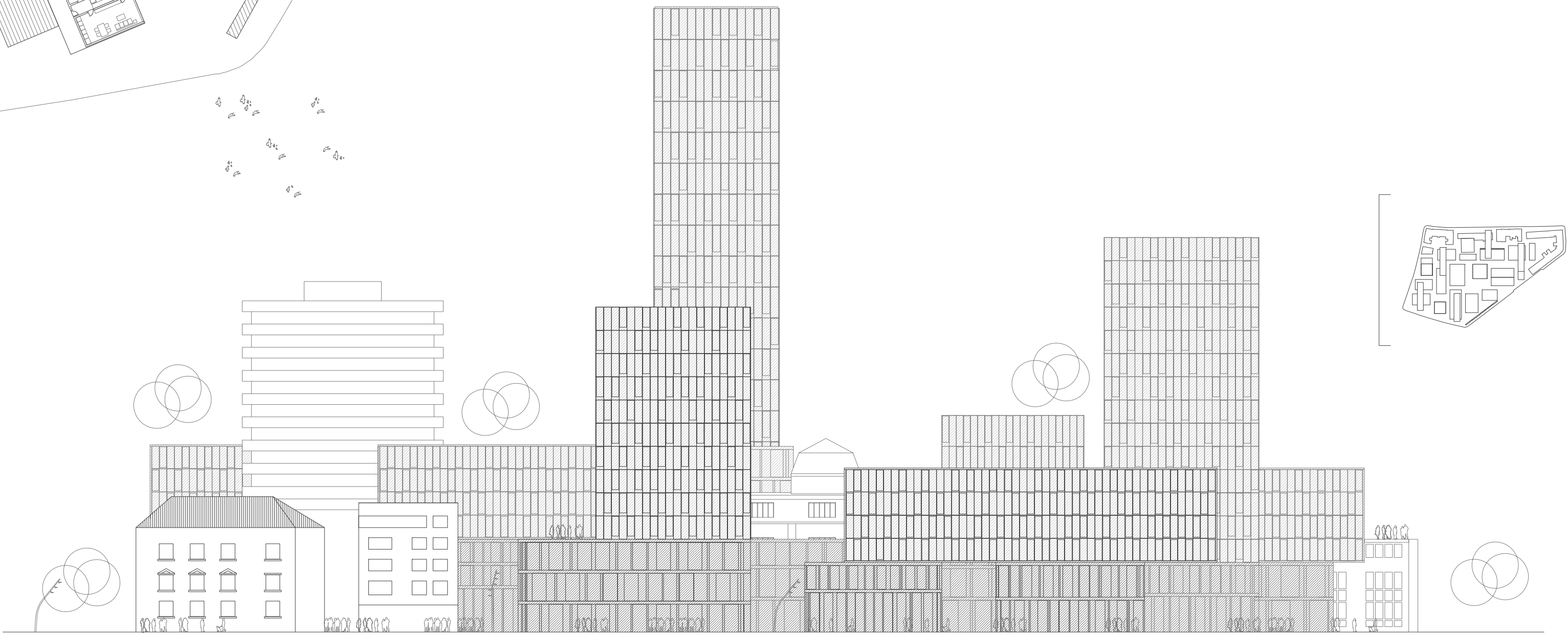
SECTION E-W 1:500



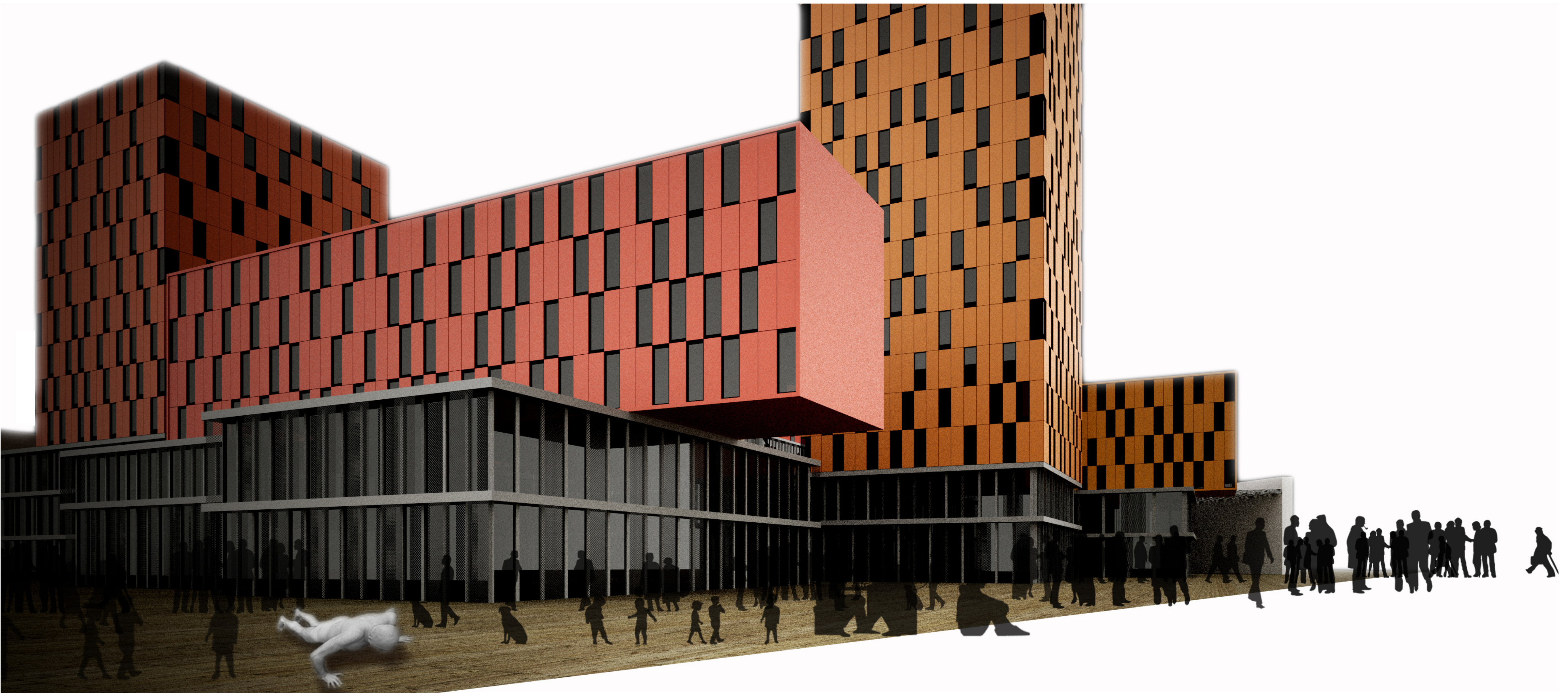
BADELUNBLOCKEDBLOCK



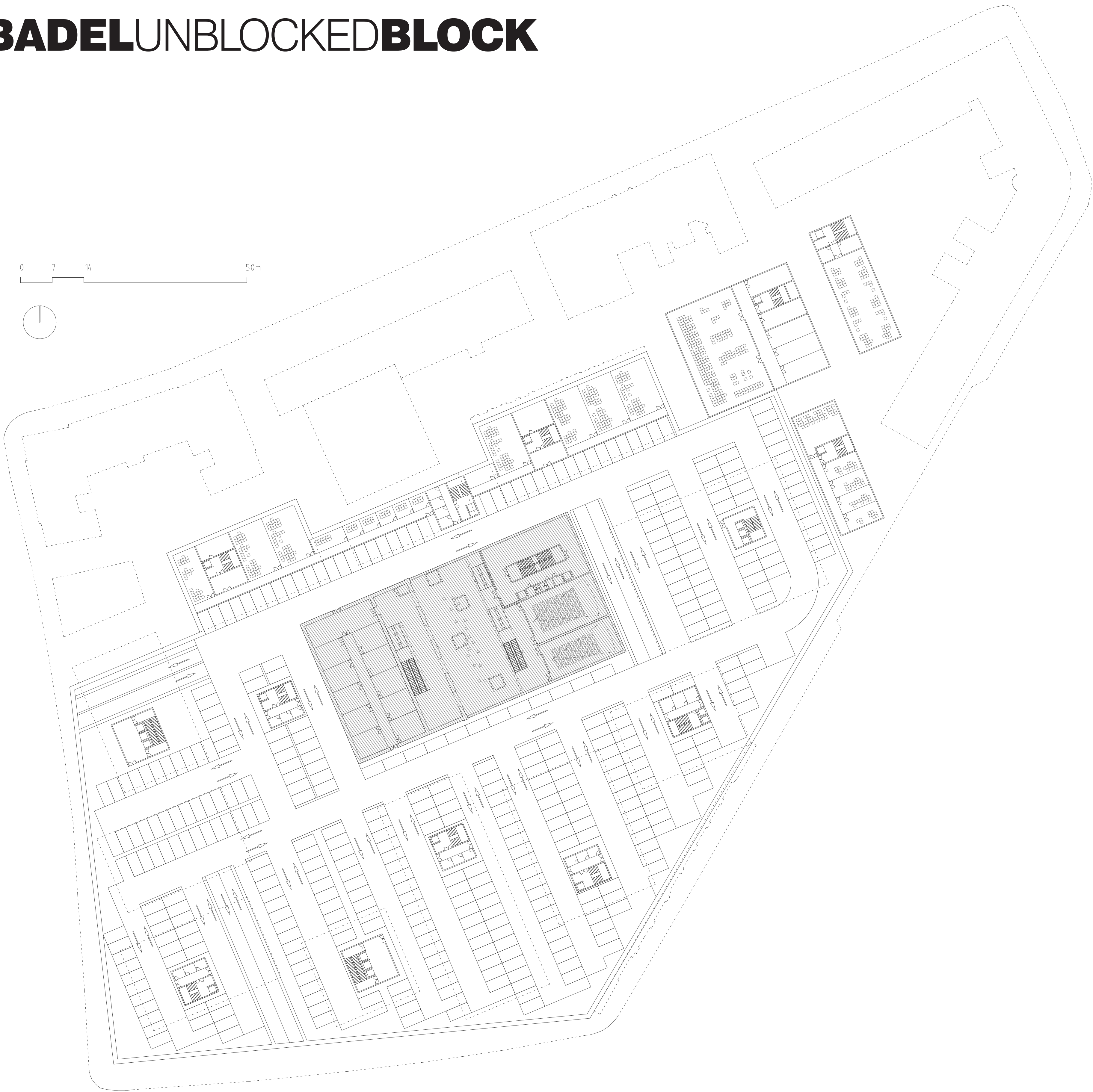
TYPICAL UPPER FLOOR PLAN +4 1:500



WEST FACADE 1:500



BADELUNBLOCKEDBLOCK



We propose a renewal of the "Distelerija" is previous function as a factory to a space for creative production, which houses a workshop, creative studios and a performance hall.

A new public entrance is created below ground through a new public library building - the "kocka" / cube - which takes the public down an external escalator from the square, into a basement gallery space and up into the eastern half of the "distelerija".

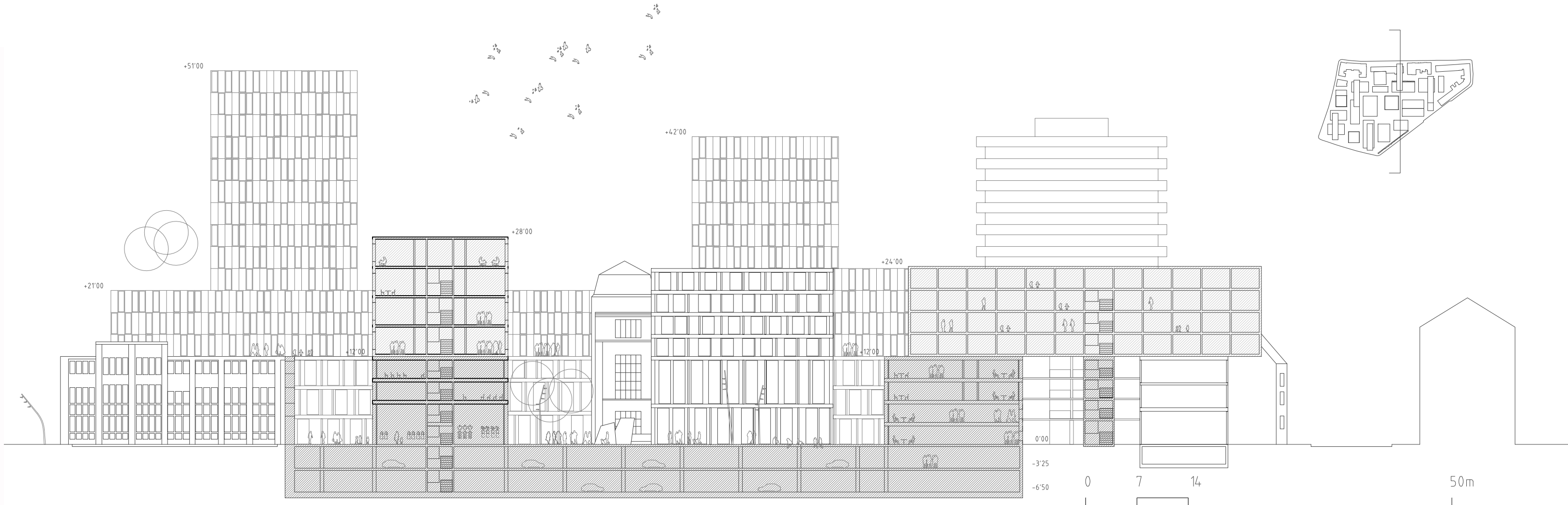
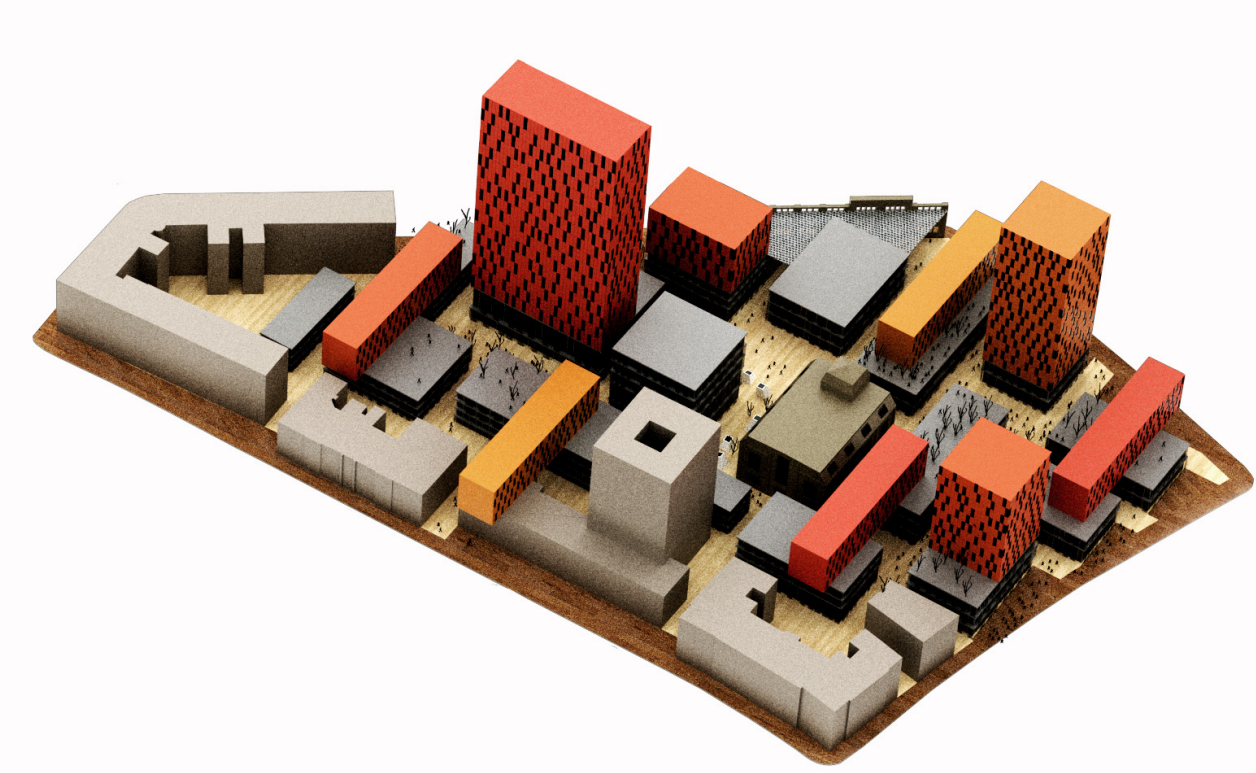
The conservation and reuse of the existing north side main entrance and circulation core as strictly a "worker" entrance gives a historical reference to the workers of Badel.

A duality between semi-private production space and public gallery space adds a layer of complexity to the Badel block.

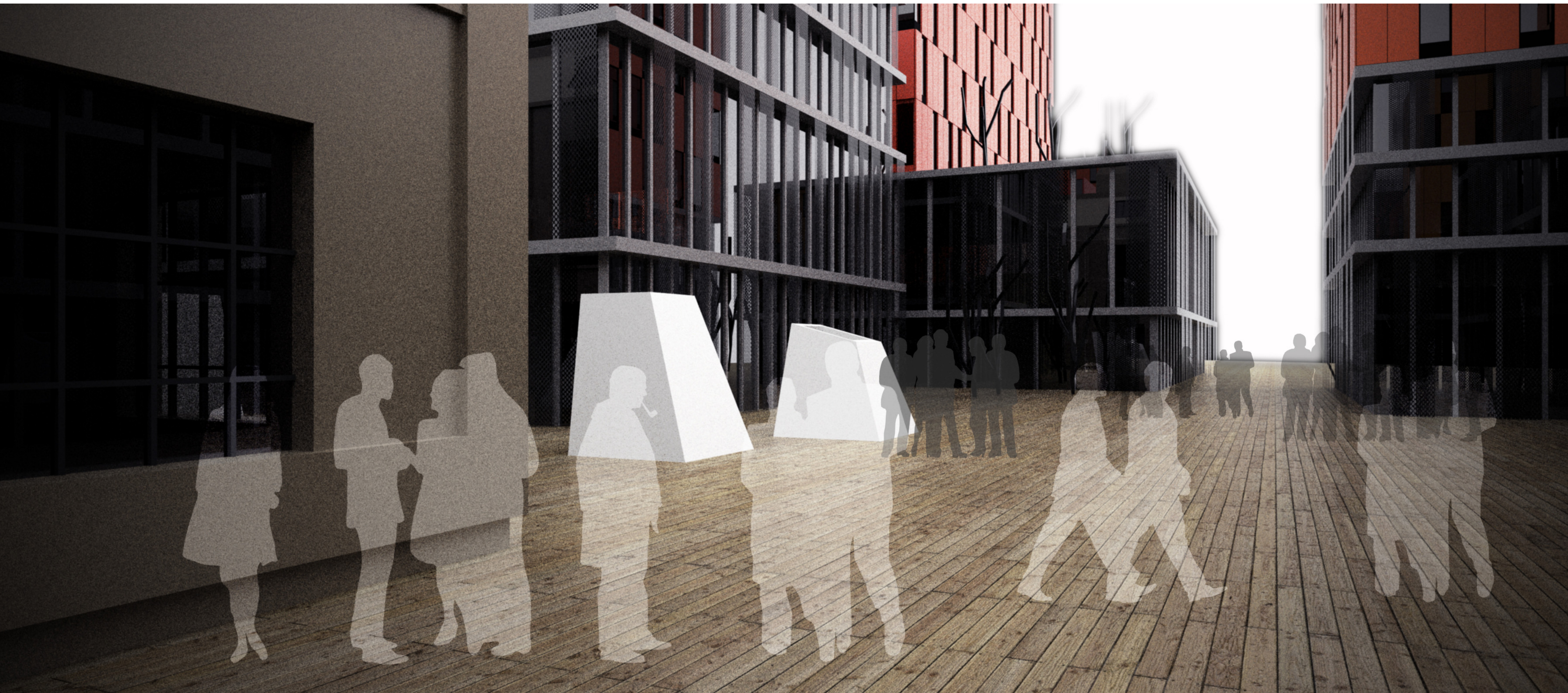
The first floor central Performance Hall becomes a potential meeting point of these two worlds during public exhibitions and performances of produced work.

Retaining the above ground primary structure and reconstruction of the facade doesn't change the appearance of the building from the outside, while light architectural interventions give flexibility to the internal space.

BASEMENT FLOOR PLAN -1 1:500



SECTION 1:500

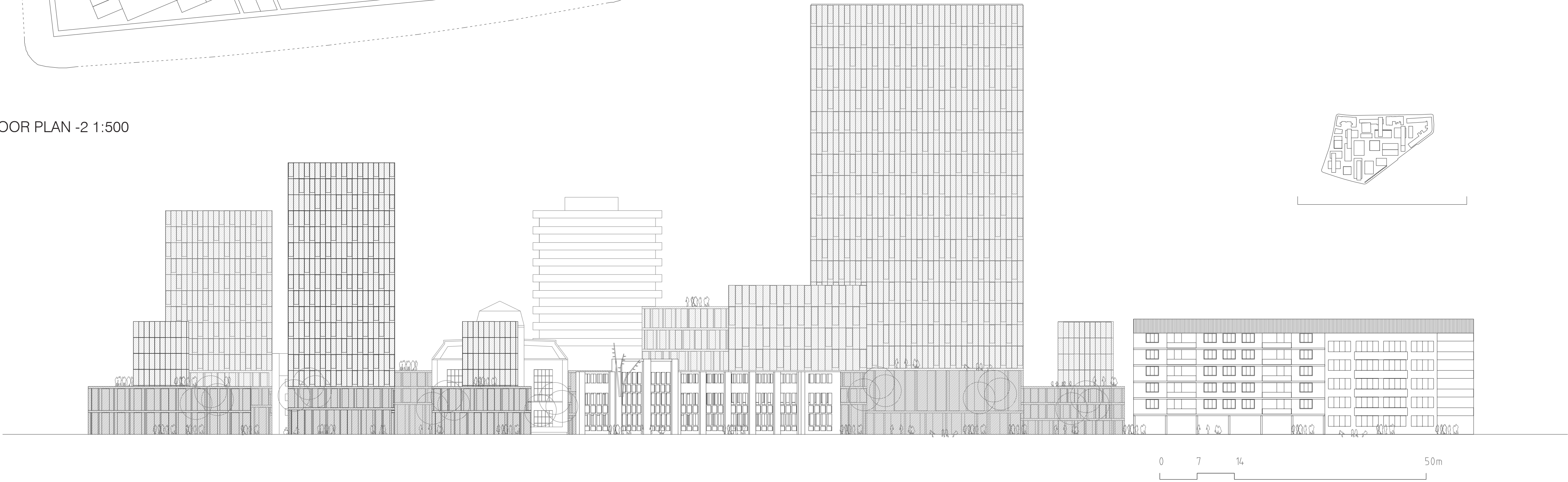


BADELUNBLOCKEDBLOCK

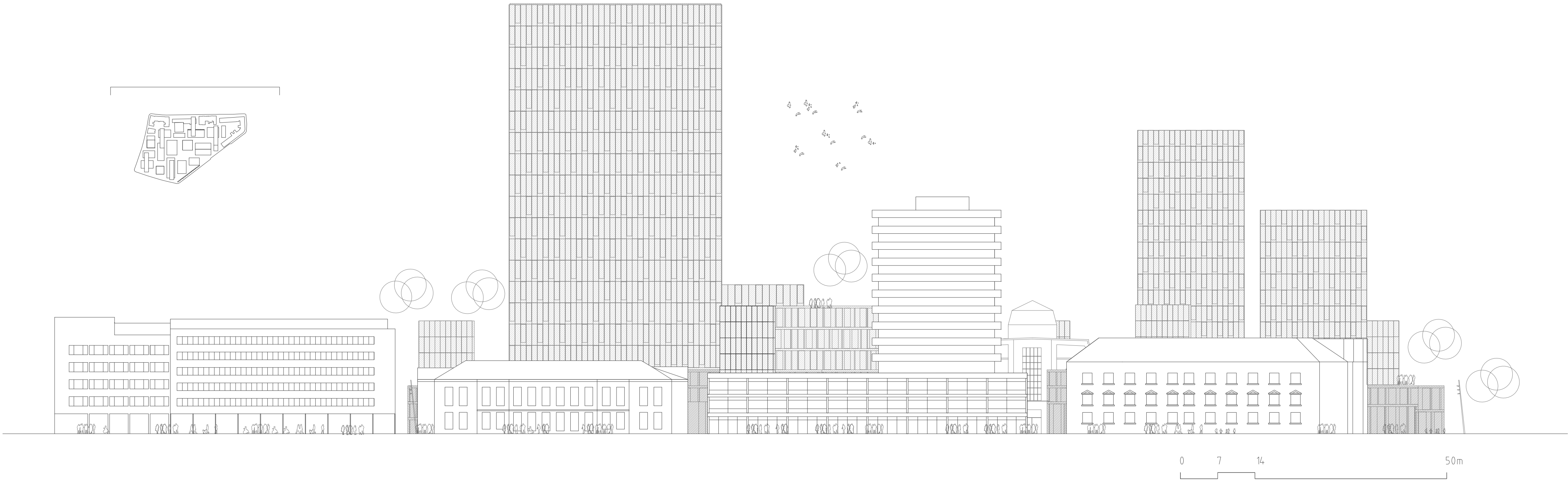


PROGRAMME

BASEMENT FLOOR PLAN -2 1:500



SOUTH FACADE 1:500



NORTH FACADE 1:500

BADEL UNBLOCKED BLOCK

ROOF PLAN 1:1000

