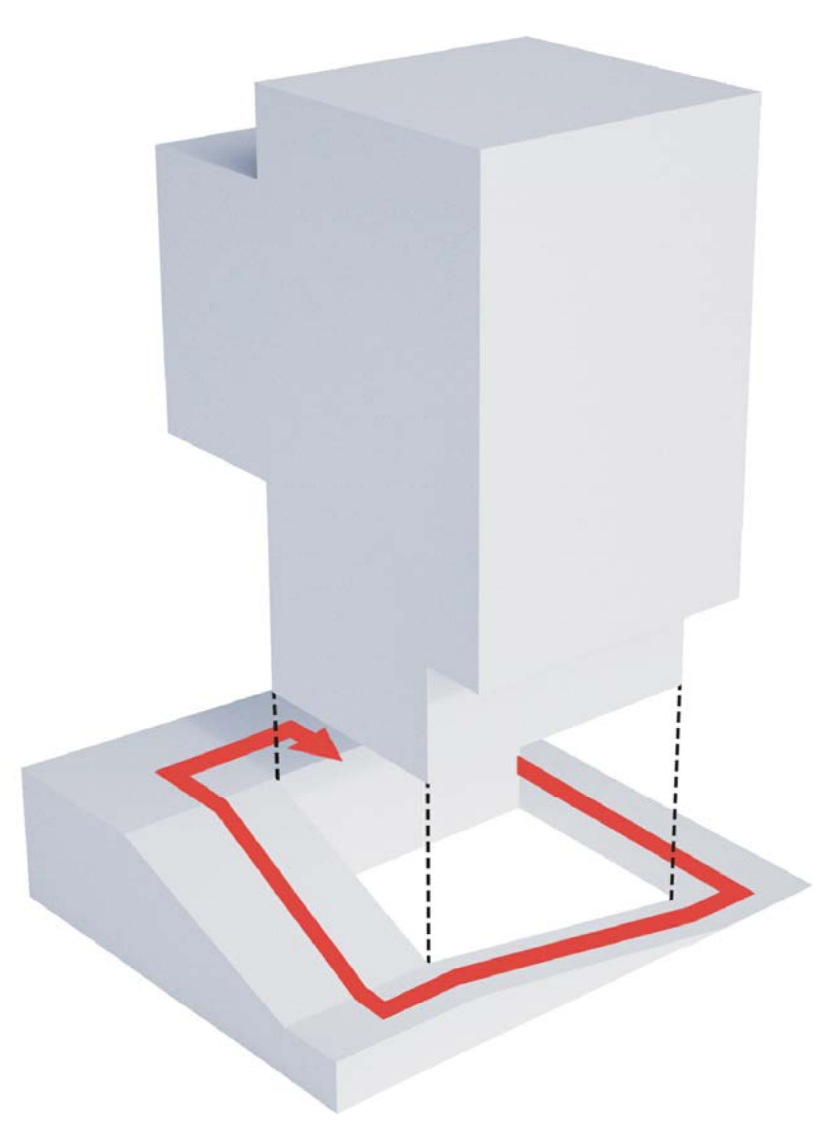
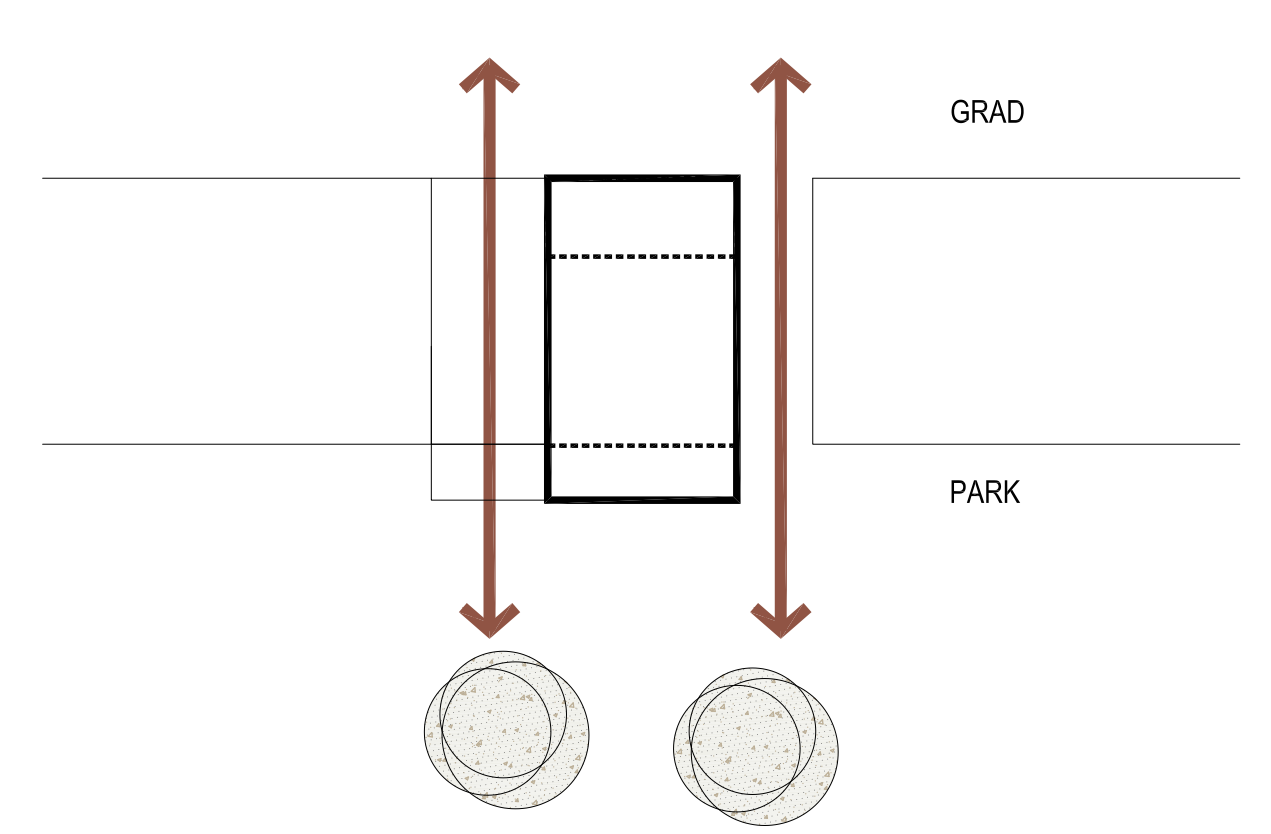




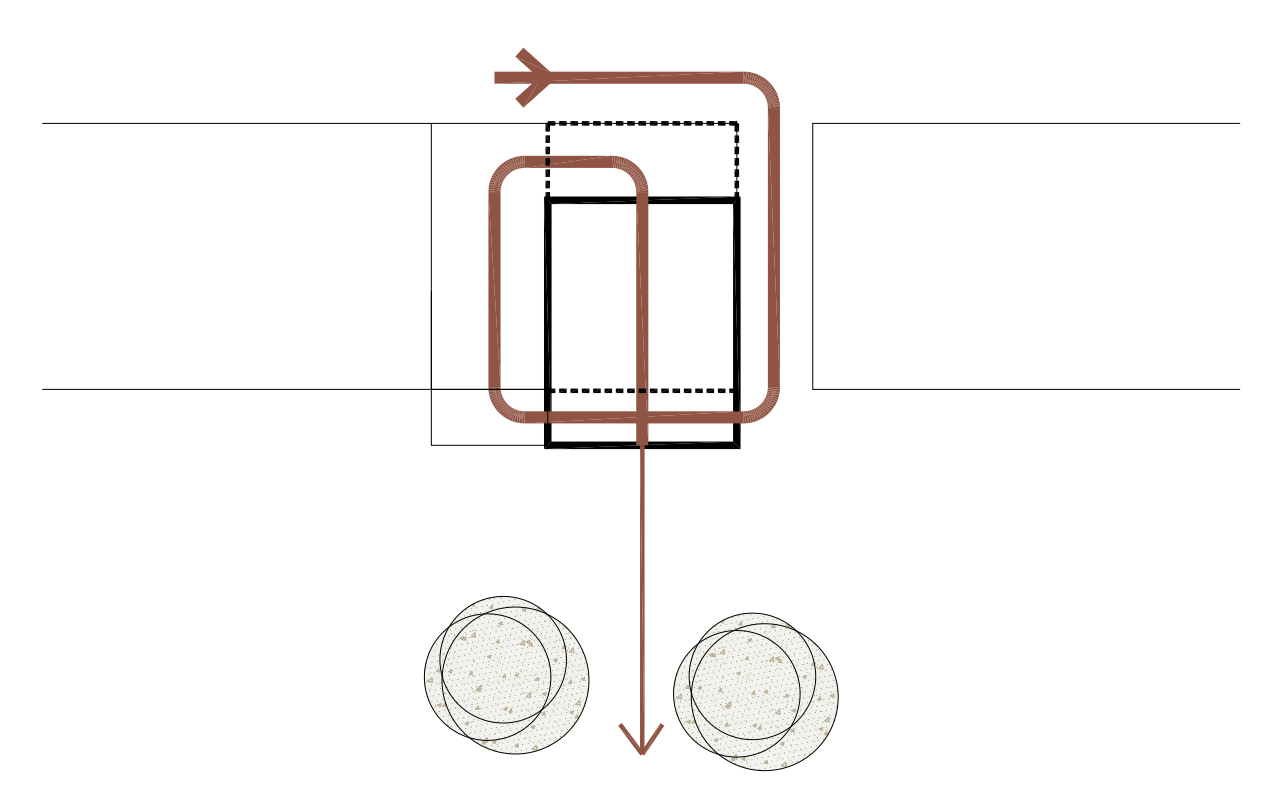
SITUACIJA M 1:500



KONCEPTUALNA SHEMA / CONCEPT



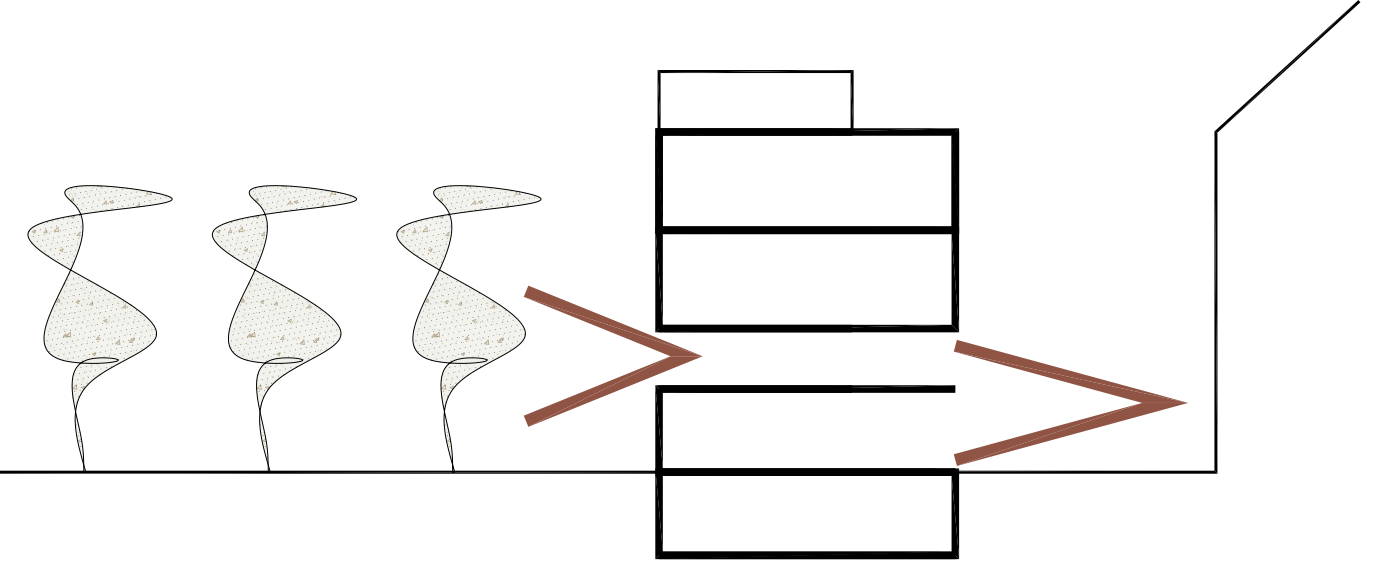
TRANSPARENTNOST / TRANSPARENCY



OBUJAM / EMBRACE



ODNOSI ULICA / GALERIJA / PARK



WHITE CUBE

Priprema prostora nadograđujemo idejom o konceptu dostupnog tzv. »galerijskog puta«, koji nas već iz ulice Illice u obliku spirale vodi mimo parka i preko stubišta u smislu »skalinade« (otvoreni teatralni prostor) do ulazne platforme u gornjem parteru. Prilazni - galerijski put ima glavnu ulogu pri konceptualnoj zamisli objekta, jer obujmjuje građevni korpus u cjelini i postaje dijelom galerijskog doživljaja, puta koji te provodi kroz sve karakteristične ambijente gradske ulice, parka, do belvedera - ulazne platforme s pogledom na »grad« u gornjem parteru. Uspinjanjem na platformu posjetitelj se u izvjesnom smislu isključuje iz javnog te ulazi u »zasebno«, intimnije.

Arhitekturni koncept je determiniran gradskim postojem na kojem se u krajnji istočni dio implementira kubus Umjetnosti (»white cube«) i to na način, da ne uspostavlja fizičku povezanost s postojećim građevnim nizom na zapadu, nego upravo suprotno - kroz nj propušta veći prazan prostor. Zbog prelaženja praznog prostora kako na istočnom, tako i na zapadnom dijelu - kubus izrazito monolitnog karaktera prezentira se prema van kao određena vrsta slobodnostojeće zgrade (pendant), koja konzolno leži iznad postojeće i grada. Cjelokupna kompozicija tada gubi svoju strogu geometriju koja se s umetnutim praznim prostorima suplino implementira u postojeći ulični niz.

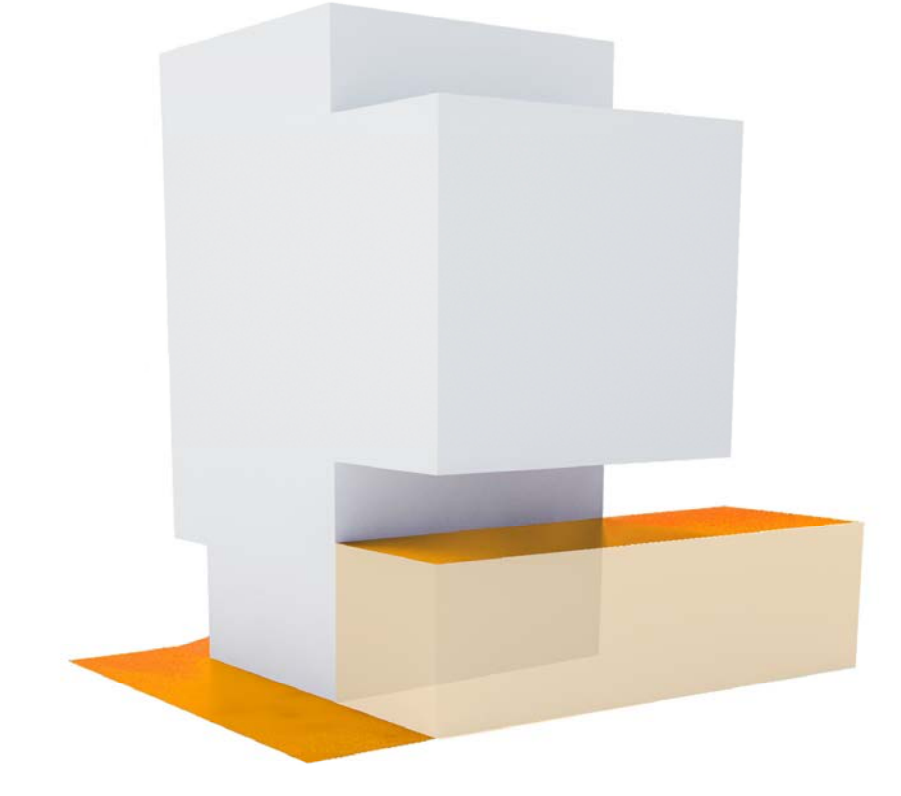
The spatial story is enhanced by the idea of designing an accessible, so-called »gallery path«, leading from Illica street in a spiral form past the park and over the steps, in the form of a Skalinada (an open theatrical space), to the entrance platform on the upper ground floor (parterre). The access-gallery path plays the main role in the conceptual design of the building, for it embraces the whole building corpus and becomes a part of the gallery experience, of the path, leading you past all the characteristic ambiances of the city street, the park, up to the belvedere - the entrance platform, with a view of the »city« from the upper parterre. With this climb to the platform the visitor turns away from the public and enters more privately, intimately.

The architectural design is determined by the lower, »urban« base on which the cube of Art (»white cube«) is placed on its eastern part in a way that denies the physical connection with the existing set of building in the West whilst deceptively leaving a larger empty area through it. Due to the transition of an open area also on the Eastern as on the Western part, the cube, of distinctive monolithic character is, on the outside, presented as a kind of freestanding structure (a pendant), which undulates in the form of console above the base and the city. The entire composition loses its strict geometric form, subtly integrated by these intermediate empty spaces into the existing series of streets.

PRIKAZ U ILICI / VIEW FROM ILICA STREET



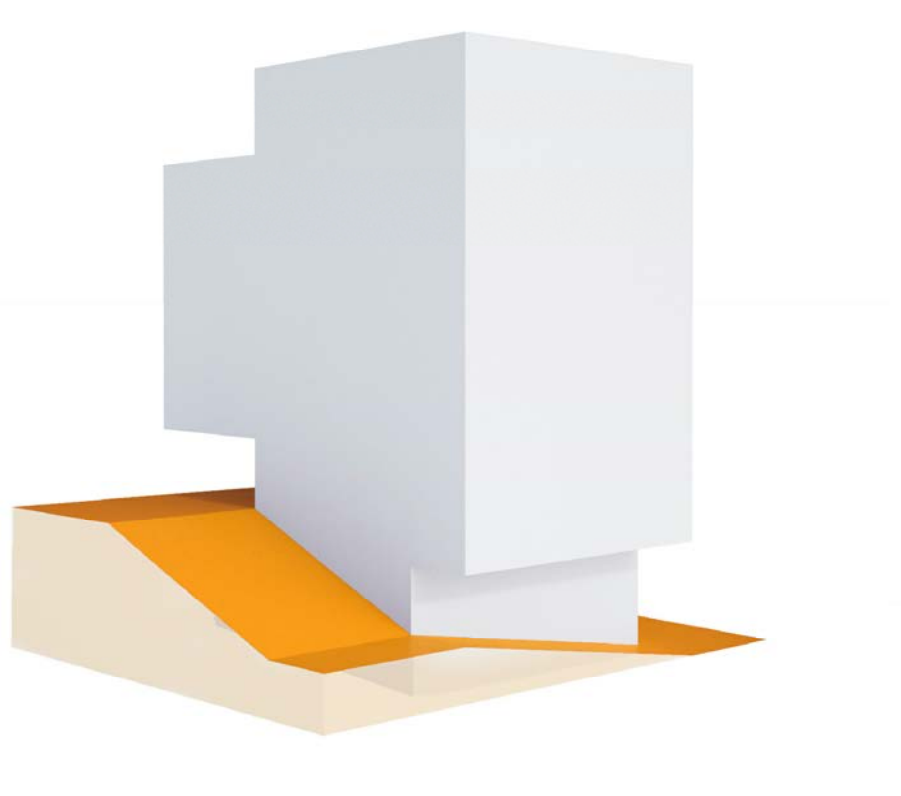
0° - 360° - 0°



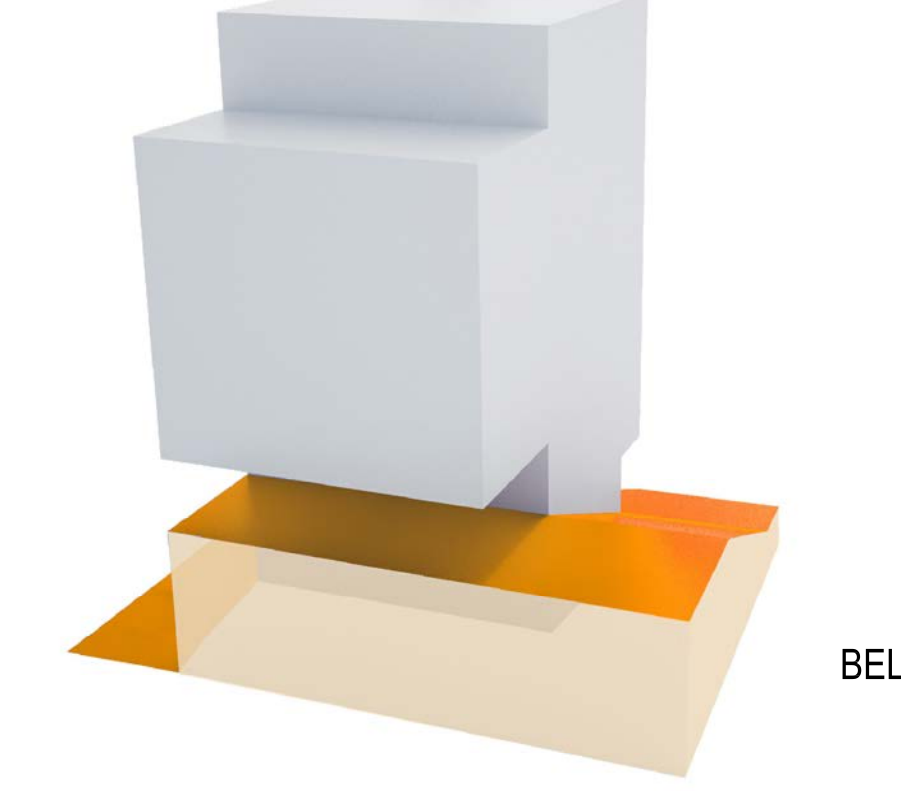
ILICA



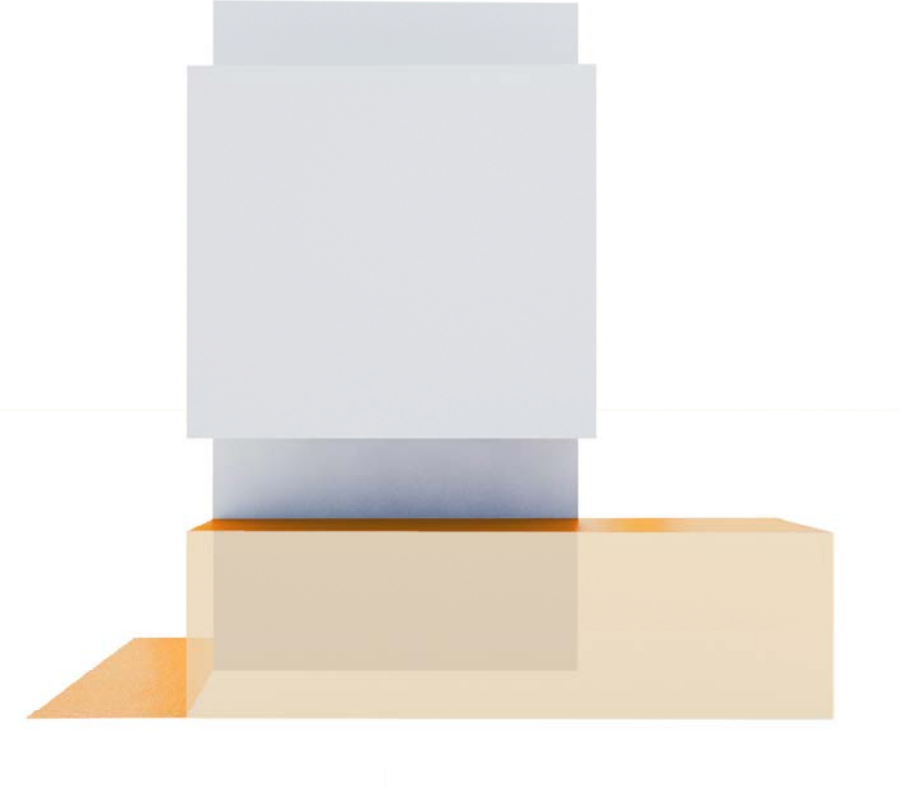
PASAŽA



PARK



BELVEDERE



ILICA